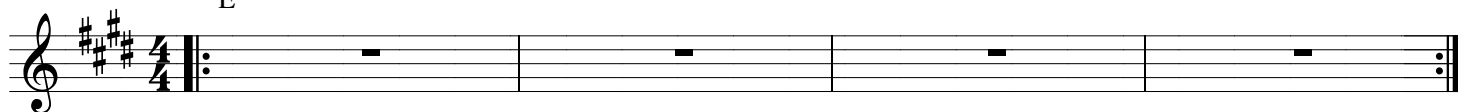


# Adonai

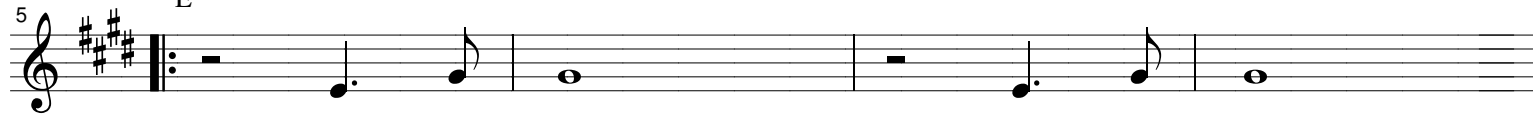
Words and music by Dennis and Georgia Clifton

♩ = 90

E



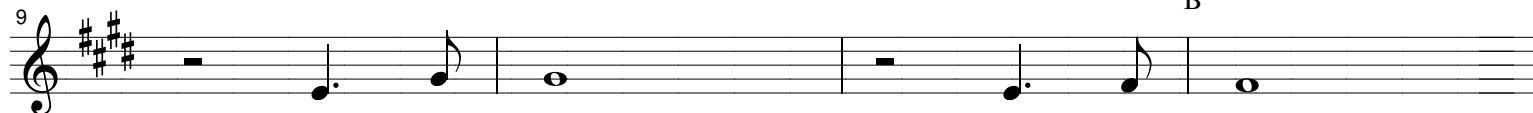
5 E



A - do - nai,

A - do - nai,

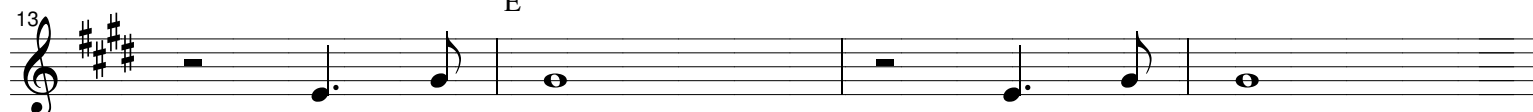
9 B



A - do - nai,

A - do - nai.

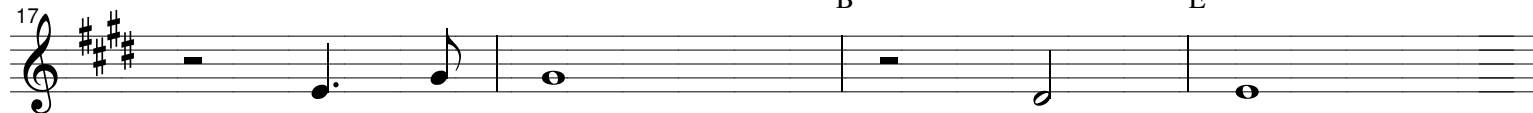
13 E



Ho - ly One,

I am here.

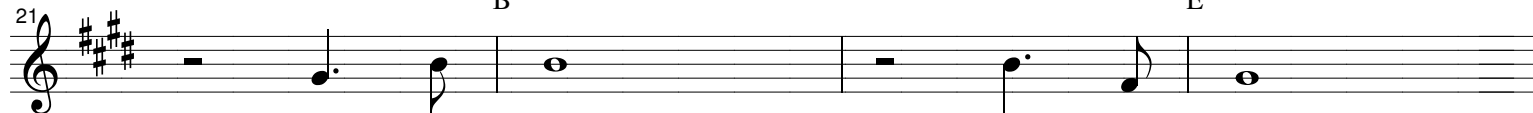
17 B E



A - do - nai,

draw near.

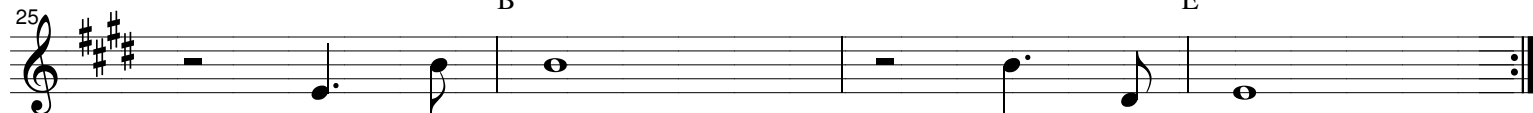
21 B E



I de - sire

no - thing more

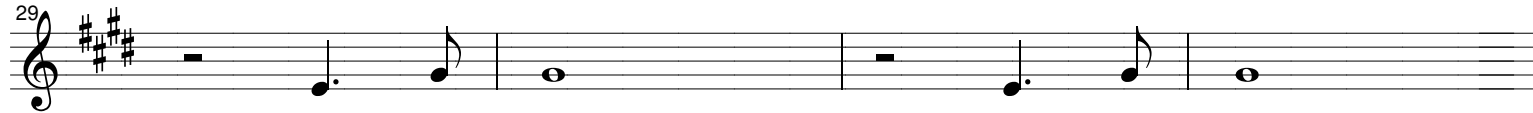
25 B E



than to be

with You, Lord.

29 E



A - do - nai,

A - do - nai,

33 B

A - do - nai, A - do - nai.

37 E

Ho - ly One, I am here.

41 B E

A - do - nai, draw near.

45 B E

A - do - nai, draw near.

49 D E

Da-da-da-da-da-da-da-da - da da - da - da da.

53 D E

Da-da-da-da-da-da-da-da - da da - da - da - da.

57 D E

Da-da-da-da-da-da-da-da - da da - da - da - da.

61

D E

Da-da-da-da-da-da-da - da da - da - da - da.

65

69

E